



Update from the Consortium of Lancashire & Cumbria LMCs

Tuesday 4th February

General Practice Alert State (GPAS)

You can see the latest SitRep results below. Results can also be found [on our website](#).

The data we do not receive prevents us from providing a robust picture of system partners and hinders our efforts to push for more support on your behalf.

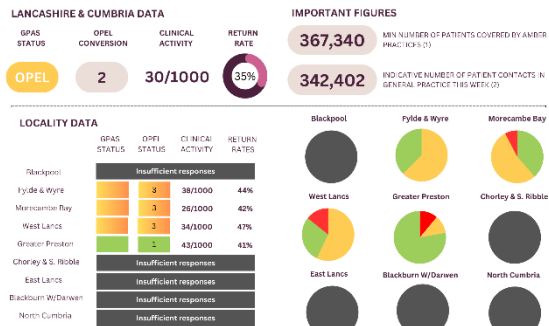
We really appreciate you taking the time to help us help you.

[Please let us know](#) if you are a Practice Manager and do not receive the GPAS input emails.

If someone at your practice needs to be added to the distribution list please email enquiries@nwlmc.org.

Submission links are sent out every Tuesday and Wednesday.

GENERAL PRACTICE ALERT STATE SITREP | 31.01.2025



A SELECTION OF THIS WEEK'S PRACTICE COMMENTS

Alert once assumed back to amber from black due to cover on 7400175, when all power to all leaving practice without having, light and access to vital care support systems. RIB agreed early closure. Normal hours resumed on next open day of 27/01/2025. We are currently doing RCT from 08:00-16:00 on 27/01/2025 as well as clinical services with potential support staff out of a minimum due to cost implications. As always our capacity, staff, staff sick, usual issues with IT remain very sticky.

GPAS CHANGE SINCE LAST SITREP



A QUICK GUIDE TO THE GPAS STATES



LMC NOTE:

Please continue to share your data with us so that we can ensure the system is aware of any capacity and demand concerns pertaining to General Practice.

© 2025 The Lancashire and Cumbria LMCs. All rights reserved. For more information, please contact us at enquiries@nwlmc.org.

Please let us know if you have any questions/ issues

LMC Elections Now Open

Each LMC in the Consortium is now holding elections, providing GPs with the opportunity to shape local representation and influence key decisions affecting General Practice. The LMCs play a crucial role in advocating for the profession and ensuring that the voice of General Practice is heard.

We encourage all GPs to engage in this process—whether by standing for election or nominating a peer. Your involvement is essential in strengthening the LMCs ability to represent and support practices effectively.

For more details on the election process and how to get involved, please contact your LMC Secretary:

North Cumbria LMC: mikaela.george@nwlmc.org

Morecambe Bay LMC: tabitha.mitchell-greaves@nwlmc.org

Lancashire Coastal LMC: toni.parker@nwlmc.org

Central Lancashire LMC: jessica.tomlinson@nwlmc.org

Lancashire Pennine LMC: ross.mcduff@nwlmc.org

National Insurance Contributions - Template letter to MPs

We have written a template letter for practices to send to their local MPs regarding the impact of the recent Employers' National Insurance Contribution (NIC) changes on NHS GP practices. As you know, practices have been excluded from employer support on NICs, placing further financial strain on an already struggling sector. Without urgent intervention, this could significantly destabilise General Practice.

We urge all practices to use this letter to highlight these concerns to their MPs and push for immediate government action. You can find the template letter [here](#).

NCIC Electronic Discharge Summaries - North Cumbria Only

On the 29th January, NCIC circulated correspondence to practices regarding historic discharges failures.

The LMC remains concerned about the backlog of electronic discharge summaries and the lack of appropriate funding for practices to process them. We are aware that some practices are being pressured to take on this work "for the good of the patient," but we strongly maintain that general practice cannot continue to absorb the failures of another service without proper resourcing.

We have written to NCIC demanding a clear, written commitment that practices will be appropriately funded and that all clinical risks and liabilities remain with NCIC. We have also called on NCIC to issue a public statement accepting responsibility for this failure, ensuring transparency for patients and protecting practices from undue blame.

Until these assurances are received, the LMC advises that practices should not take on this additional workload.

Please get in touch should you have any questions.

BMA Virtual Rally on Sessional GP Unemployment

Join the BMA as they unite to tackle the pressing issue of sessional GP unemployment on **Wednesday 12 February, 7.30-9pm**. This is your chance to be part of the conversation, share your voice, and mobilise for change. During the rally, you'll learn about the latest insights on the issues, what the BMA has been doing, updates on GP collective action in England, ways to get involved with your LMC to drive change, and more. Speakers include BMA Chair of the Sessional GPs committee, Chair of GPC England, Co-chairs of the GP registrars committee, and a RCGP representative.

Let's raise our collective voice and demand progress. Together, the BMA will ensure the challenges faced by sessional GPs remain a priority. Gain valuable insights, actionable steps, and learn how the BMA is standing with you. Register [here](#).

EMPOWER Programme - Nelson and Blackburn

IMO Charity have included further EMPOWER programmes, held in Nelson and Blackburn, both delivered in Urdu. More details can be found [here](#).

Lancashire Coastal Soapbox

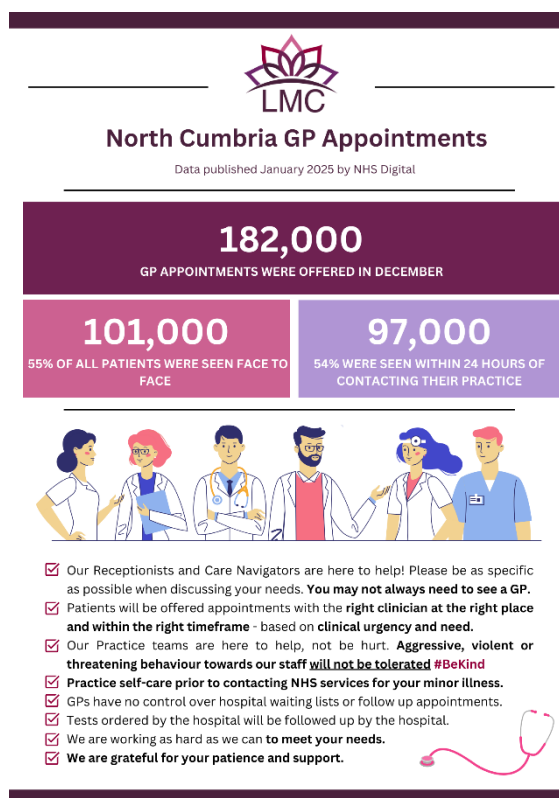
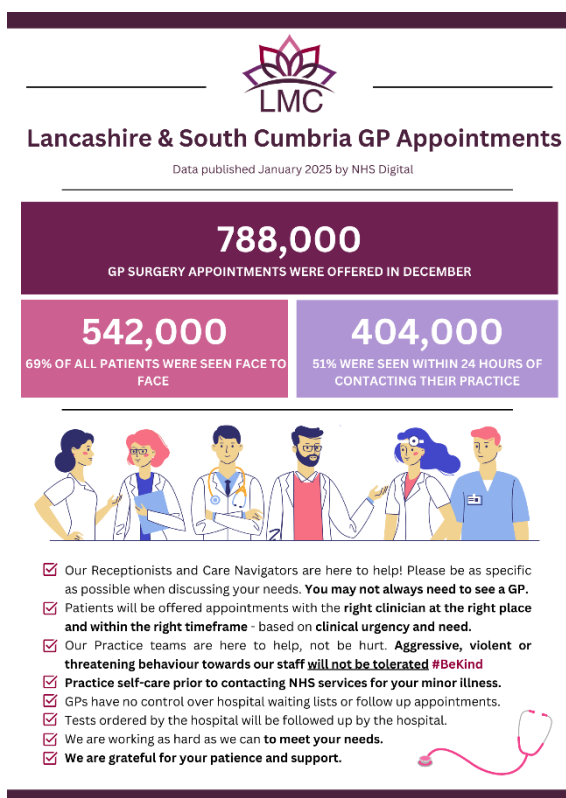
This is a reminder that the next Lancashire Coastal soapbox is taking place on **Wednesday 12th February at 1pm - 1:30pm via Teams**. If you have not received the link, please email Rebecca.Noblett@nwlmc.org

General Practice Appointment Infographics - December 2024

We have created infographics for Practices to use in your waiting rooms, websites and social media. These infographics raise patient awareness on the current state of General Practice and how practices are operating.

Some example infographics can be seen below. Feel free to pick and choose the images that are suitable for your practices needs [on our website](#).

If you would like the images in a different format [please get in touch](#).



LMC Training Events 2025

Please see a list of upcoming training events being hosted by the LMC:

- [Complaints Training](#)
- [Conflict Management](#)
- [CQC Update](#)

To book your place or find out more information, please contact Rebecca.Noblett@nwlmc.org or view [here](#).

Help Us Grow Our Audience

We understand that you are busy and are likely to receive many emails on a daily basis. However it is important for you to receive communications from us because **we can help and support you.**

We know there are many colleagues who do not receive our brieflet, so please help us by sharing this with your team and letting us know to add them to our distribution lists.

Contact Us